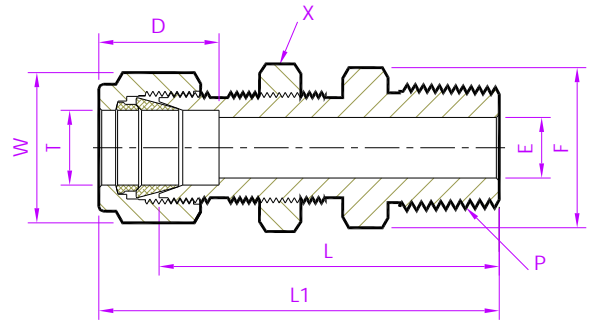


- Tube Fitting (Double Ferrule)-
Tube To Male Pipe Thread



Bulkhead Male Connector

Fractional Tube x NPT(M)

Tubefit Part No.	Equivalent Part No. Type 1	Equivalent Part No. Type 2	TUBE OD Ø T	NPT Male Pipe Size P	ØE	D	L	L1	Body Hex F	Nut Hex W	Panel Nut Hex X
Dimensions in Inches											
2 - BMCD - 2N	- 200 - 11 - 2	2MBC2N	1/8	1/8	0.09	0.50	1.57	1.83	7/16	7/16	1/2
3 - BMCD - 2N	- 300 - 11 - 2	3MBC2N	3/16	1/8	0.12	0.54	1.63	1.89	7/16	1/2	9/16
4 - BMCD - 4N	- 400 - 11 - 4	4MBC4N	1/4	1/4	0.19	0.60	1.84	2.13	9/16	9/16	5/8
4 - BMCD - 6N	- 400 - 11 - 6	4MBC6N		3/8	0.19		1.87	2.16	11/16		
4 - BMCD - 8N	- 400 - 11 - 8	4MBC8N		1/2	0.19		2.08	2.37	7/8		
5 - BMCD - 2N	- 500 - 11 - 2	5MBC2N	5/16	1/8	0.19	0.64	1.79	2.08	5/8	5/8	11/16
5 - BMCD - 4N	- 500 - 11 - 4	5MBC4N		1/4	0.25		1.98	2.27	5/8		
6 - BMCD - 4N	- 600 - 11 - 4	6MBC4N	3/8	1/4	0.28	0.66	1.97	2.26	11/16	11/16	3/4
6 - BMCD - 6N	- 600 - 11 - 6	6MBC6N		3/8	0.28		1.97	2.26	11/16		
6 - BMCD - 8N	- 600 - 11 - 8	6MBC8N		1/2	0.28		2.22	2.51	7/8		
8 - BMCD - 4N	- 810 - 11 - 4	8MBC4N	1/2	1/4	0.28	0.90	2.09	2.49	13/16	7/8	15/16
8 - BMCD - 6N	- 810 - 11 - 6	8MBC6N		3/8	0.38		2.09	2.49	13/16		
8 - BMCD - 8N	- 810 - 11 - 8	8MBC8N		1/2	0.41		2.31	2.71	7/8		
8 - BMCD - 12N	- 810 - 11 - 12	8MBC12N		3/4	0.41		2.32	2.72	1.1/16		
10 - BMCD - 6N	- 1010 - 11 - 6	10MBC6N	5/8	3/8	0.38	0.96	2.23	2.63	1	1	1.1/16
10 - BMCD - 8N	- 1010 - 11 - 8	10MBC8N		1/2	0.47		2.42	2.82	1		
12 - BMCD - 8N	- 1210 - 11 - 8	12MBC8N	3/4	1/2	0.47	0.96	2.60	3.00	1.1/16	1-1/8	1.3/16
12 - BMCD - 12N	- 1210 - 11 - 12	12MBC12N		3/4	0.62		2.60	3.00	1.1/16		
16 - BMCD - 12N	- 1610 - 11 - 12	16MBC12N	1	3/4	0.62	1.23	3.06	3.54	1.3/8	1-1/2	1.5/8
16 - BMCD - 16N	- 1610 - 11 - 16	16MBC16N		1	0.88		3.19	3.67	1.3/8		

NOTE: 1)The E Dimension is the minimum opening & Fittings of this group may be back drilling to lager ID at pipe thread or straight thread end.
2)Dimension L1, D is shown in the finger-tight position. 3)Dimensions are for reference only and are subject to change 4)NPT thread as per ANSI B 1.20.1.

- ALL PART NUMBERS ARE PROPRIETARY OF THEIR RESPECTIVE OWNERS. -